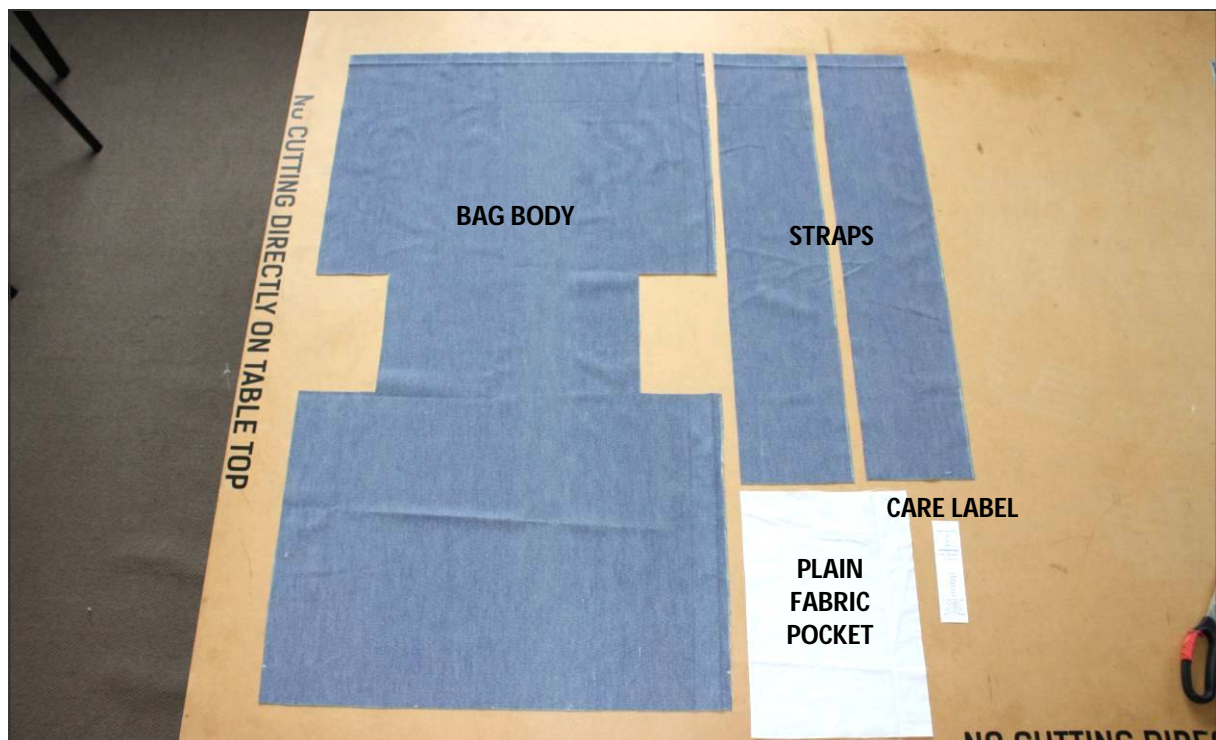


# BAGS FOR GOOD

## Cutting and Sewing Guide

© **BAGS FOR GOOD**. Use of pattern, instructions and bag are protected by copyright and authorised for personal use, educational purposes, and use by non-commercial community groups and organisations. Not to be used for commercial purposes. Please contact Bags For Good for further information.



NB: Fabric in sample photos was chosen for illustration purposes only. SEE FABRIC NOTES for recommendations.

## FABRIC NOTES

- ☐ Please **PRE WASH all fabrics** to preshrink, and remove any excess dyes, finishing products etc.

### Fabric Choice

- ☐ Fabric must be **cold machine washable, dryer-proof, and able to ironed.**
  - ☐ Please **AVOID fabrics which contain (or may contain) any spandex, lycra, silk and wool.** No thermal-backed curtain fabric.
  - ☐ Please make note of the FIBRE CONTENT of your fabric so you can tick the appropriate boxes on the CARE LABEL.
- ☐ Medium weight, tight weave (high thread count) fabrics. E.g. cotton rich curtain fabrics; patchwork fabrics, lightweight suiting etc.
  - ☐ 'Pre-loved' fabrics such as *gently used* duvet covers etc and vintage fabrics are great.
  - ☐ Please **NO satins, jacquards, velvets, rough, bobbly or stretch fabrics.**
- ☐ Bright colours, patterns etc are recommended for the BODY and STRAPS of the bag. (Ideally colours which won't show stains too easily.)
  - ☐ The straps can, if necessary, be from a separate fabric to the bag.
- ☐ The **POCKET piece must be cut from a plain/block colour, any colour other than white** (Bags For Good logo is screen printed in white ink).
  - ☐ Pocket fabric to be in a similar weight and fabric type as the body of the bag. (Great for using up smaller off-cuts of fabric!)

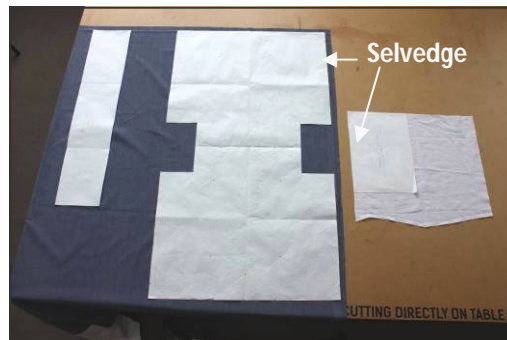
### You will also need

- ☐ Sewing thread in co-ordinating colour (black or white is fine)
- ☐ 1 CARE LABEL (provided by Bags for Good).

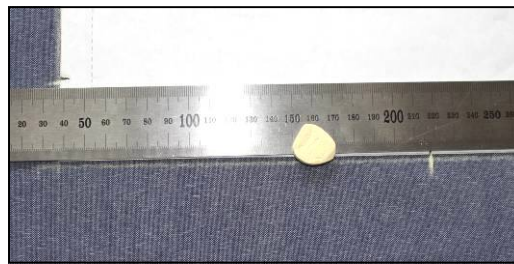
A limited amount of all of the above is available from Bags For Good. Please contact us if you need a top-up.

## CUTTING NOTES

- ☐ It is recommended that you **lightly press fabrics** before laying out the pattern, to make cutting out easier.
- ☐ Lay pattern out on the **right side** of the fabric (so markings will be where you need them during construction)
- ☐ Lay out with **all grain line parallel to the selvedge**. See photo:



- ☐ **Pocket** is cut from separate, **block coloured** fabric (also with grain line parallel to selvedge whenever possible).
- ☐ Weigh down pattern and carefully chalk around the pattern onto your fabric. *Hint: Use a ruler along the edge of the pattern for a quick and accurate line.*

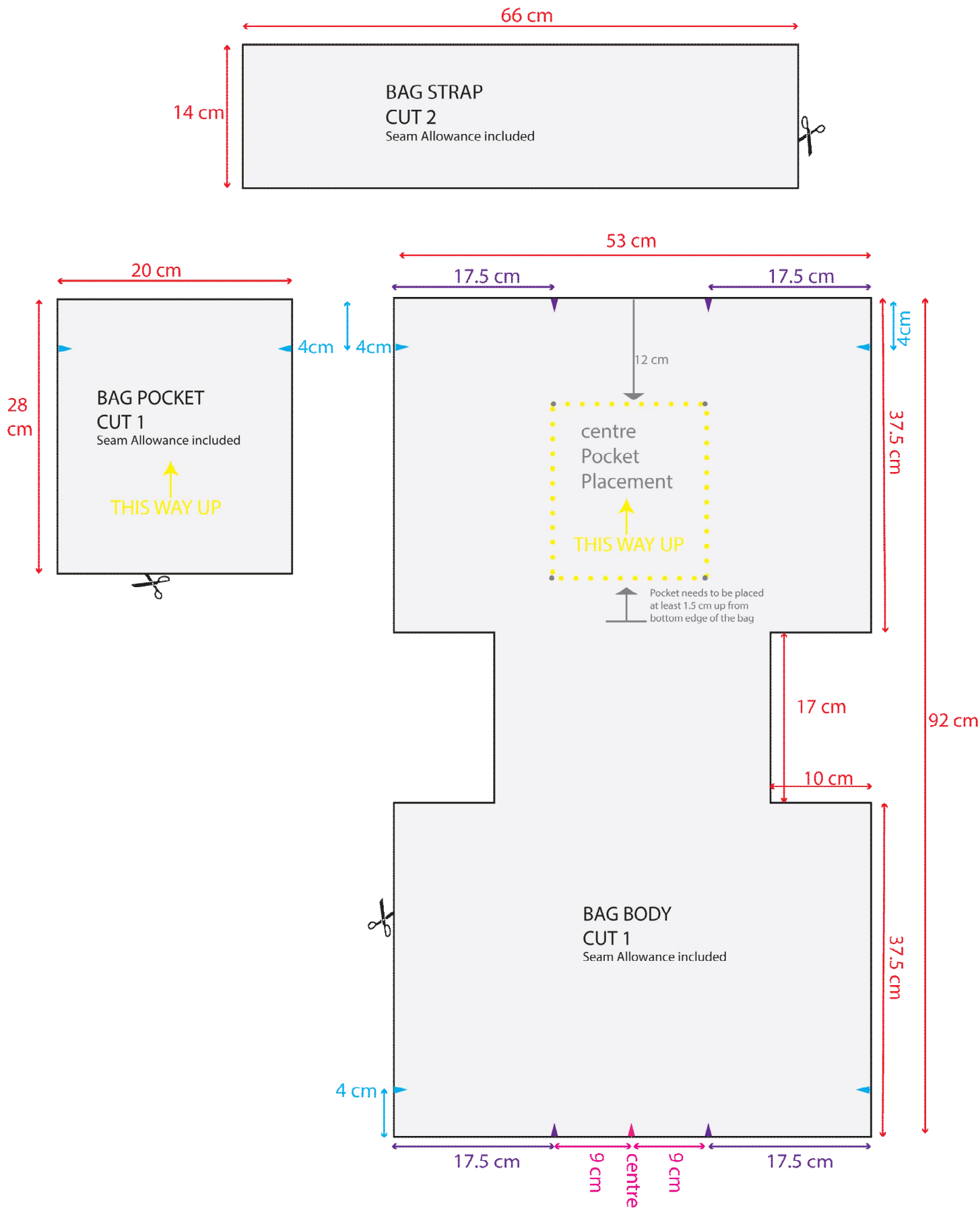


- ☐ Check to make sure you've accurately marked **all notches and reference points** from the pattern onto your fabric. (Please chalk rather than cut notches wherever possible)



- ☐ Remove the paper pattern before cutting.
- ☐ **Seam allowances are included in the pattern.**
- ☐ Please **cut with care**, as seam allowances are smaller than most sewing patterns. Please check sewing instructions carefully for details.

PATTERN MEASUREMENTS



## SEWING NOTES

**Please read the following notes and instructions carefully before you begin. If you have any questions at any stage, contact BAGS FOR GOOD on [bagsforgood@gmail.com](mailto:bagsforgood@gmail.com).**

- ☐ These instructions are intended to help sewists of all experience levels to successfully complete a Bags For Good bag.
- ☐ **If you are an experienced sewist**, please follow these instructions carefully for your first bag, as there are a few variations on standard production methods. You may like to do steps in a different order, which is fine. (You are welcome to use industry alternatives to 'pressing' if you wish.)
- ☐ If you have suggestions on an alternative sewing method (e.g. using flat-fell seams instead of French seams), **please check with us before going ahead with any variations.**

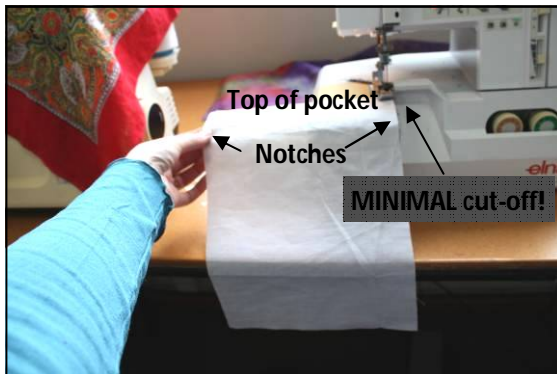
### **Sewing Machine Settings**

- ☐ Before sewing, **note positions** on your sewing machine for **3mm, 5mm, 1cm and 2.5cm seam allowances.**
- ☐ Choose a **low contrast thread colour** from your supplies. (Suggest matching/complimenting the pocket colour where possible—but it does not need to be a perfect colour match!) If in doubt, or **if you need thread**, please get in touch.
- ☐ Use the **same sewing thread on upper (needle), and bobbin** (colour and make). Please use one thread colour per bag.
- ☐ We recommend you use a 'Jeans Needle' or size 90 'sharp'.
- ☐ Use **straight stitch**
- ☐ **'Medium' stitch length.** On most machines, this is 2.5.
- ☐ **Back-tack**/reverse at the start and end of every seam.

### **Overlocking**

- ☐ When **overlocking**, please **trim as little as possible** (1-2mm) from the edge of the fabric.
- ☐ Please leave at least 2cm of 'tail' on seams from overlocking to avoid unraveling.
- ☐ If you do not have an overlocker available, **use a zig-zag** stitch instead.

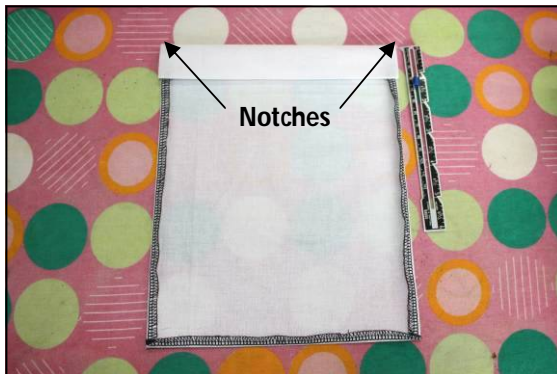
## POCKET



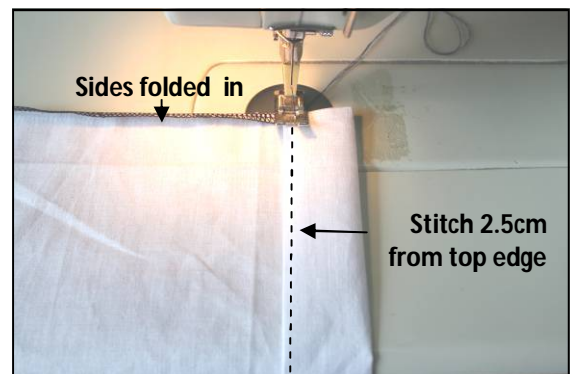
1. Overlock/zig-zag sides and bottom edge of pocket.



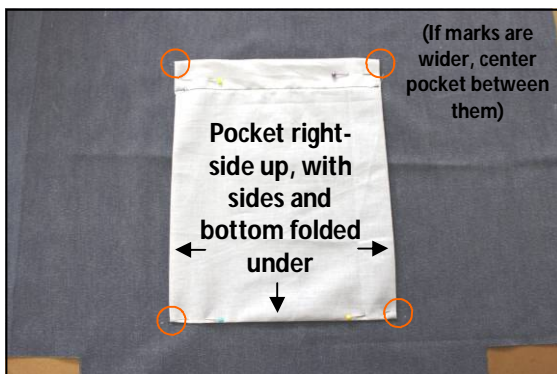
2. Fold and press pocket sides, bottom, and top edge 1cm



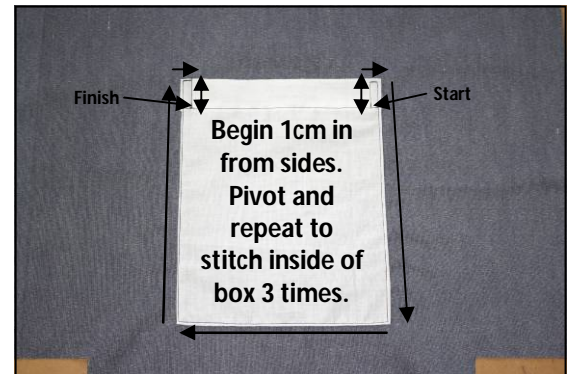
3. Fold and press top edge 3cm



4. Sew down pocket hem



5. Position pocket between marks on bag front. Pin as needed.



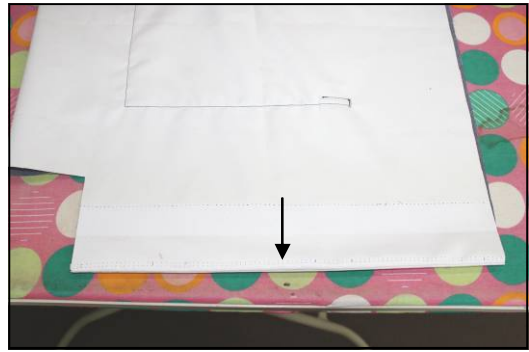
6. Top-stitch pocket to bag front, creating small box each side of pocket opening.



## SIDE SEAMS



1. With bag **RIGHT WAY OUT**, sew sides with **5mm** seam allowance  
(Overlock if fabric is prone to fraying)



2. Turn inside out and press side seams flat



3. With bag **INSIDE OUT**, sew side seams with **1cm** seam allowance



4. Press side seam allowances towards the front of the bag

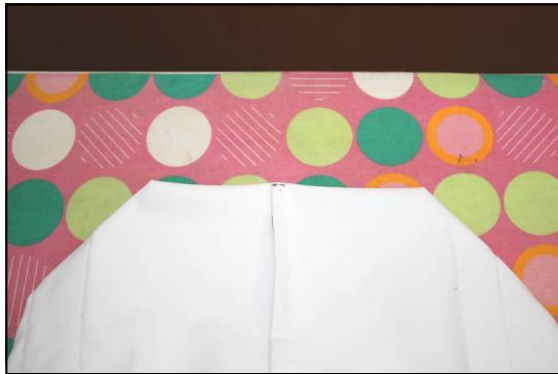
## BOX CORNERS



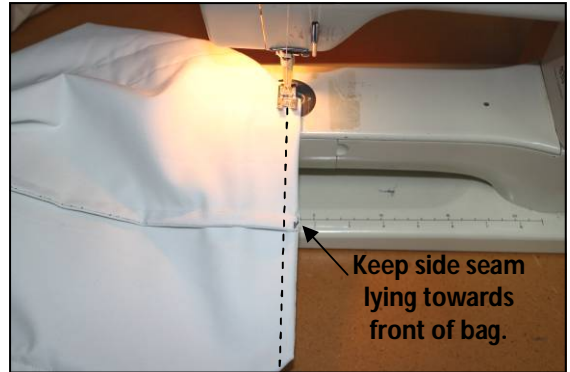
1. With bag **RIGHT WAY OUT**, open out box corner



2. Stitch with **5mm** seam allowance  
(Overlock if fabric is prone to fraying)



3. Turn bag inside out, press seam flat



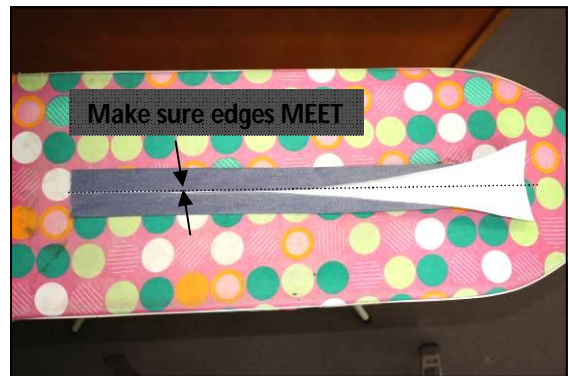
4. With the bag **INSIDE OUT**, stitch box corners with **1cm** seam allowance.



## STRAP PREPARATION



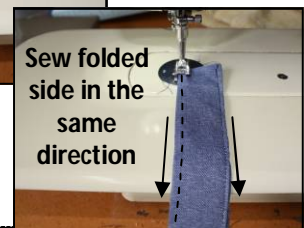
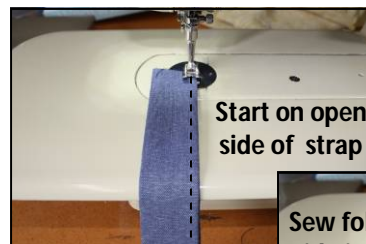
1. Fold and press strap width in half



2. Open and fold in edges of strap to meet at centre fold

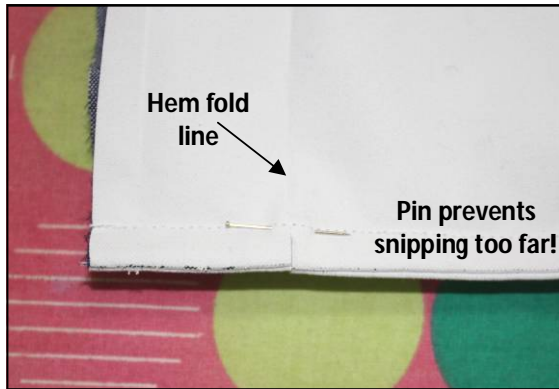


3. Refold strap in half (now 1/4 width)

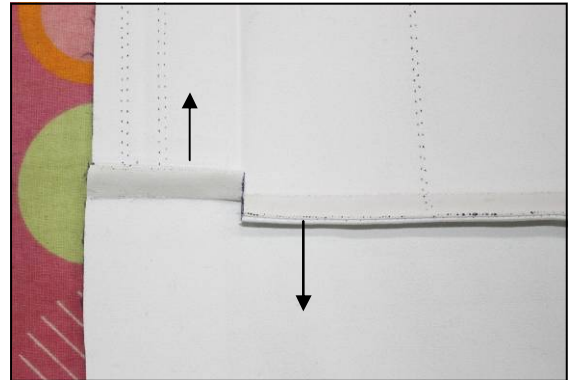


4. Edge stitch both sides of strap, 3mm from strap edge

## BAG HEM AND ADDING STRAP



1. Place a pin just outside stitch line, at hem fold, and snip seam allowances



2. Flip top section of seam allowance towards back and press



3. Fold and press top of bag hem 1cm, then 3cm.



4. Pin straps under hem, with inside edge of strap at notch mark.

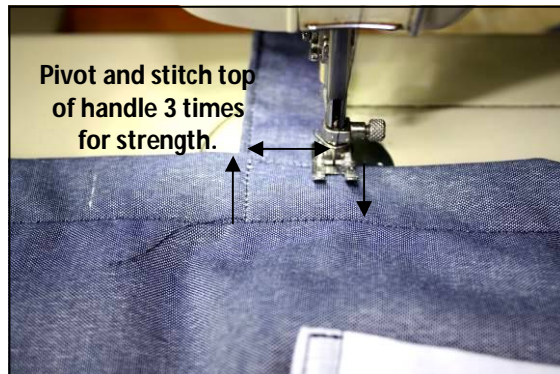


5. Fold care label in half and position on CENTRE FRONT hem notch



6. Stitch bag hem, including bag straps and care label.

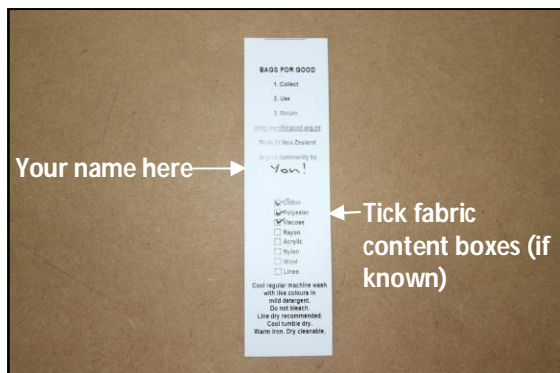
## FINISHING



**1. Fold bag straps up and sew a 'box', using the bag hem line as the base.**



**2. Check you have not left any threads untrimmed**



**3. Fill in details on care label**

## FOLDING



1. Flatten bag, front (pocket side) down



2. Fold in sides



3. Roll bag from bottom to top



4. Wrap 1 strap all the way around the bag to leave a small loop.



5. Pass the other strap through the loop.



6. Do a bag-completed happy dance!